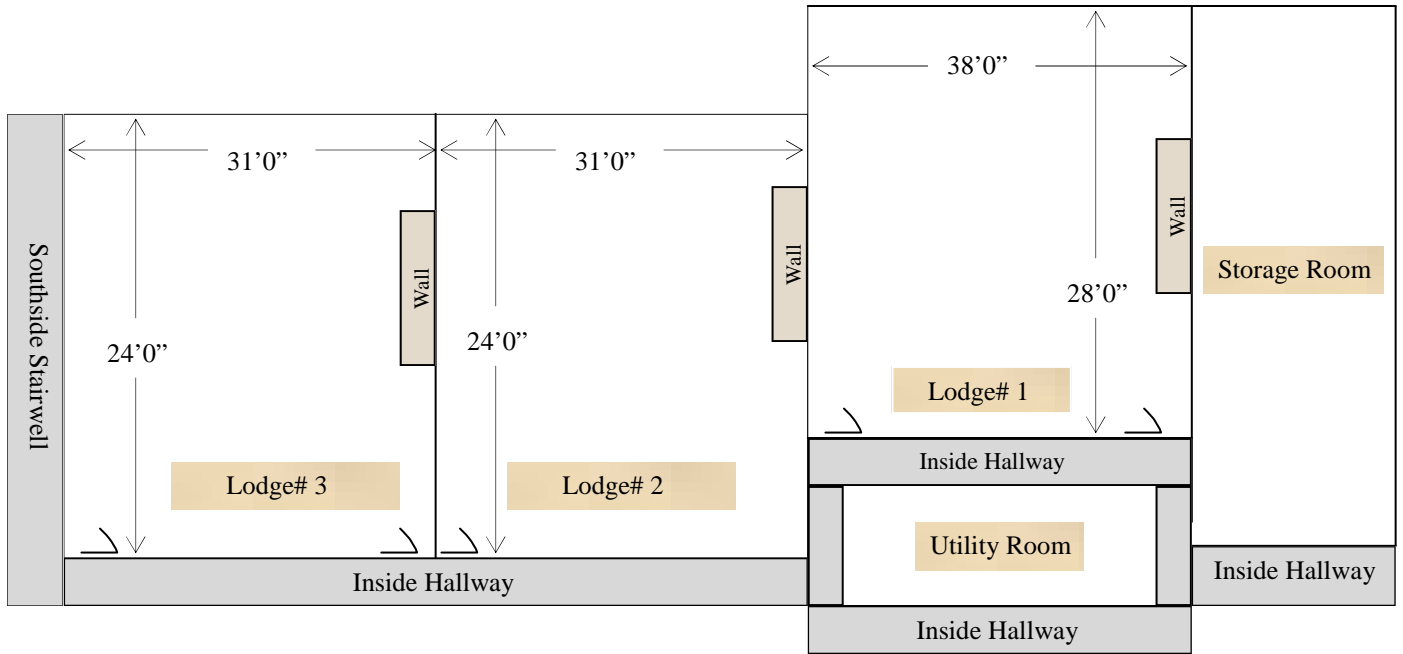


Breakout Rooms / Lower Lodge: LODGE# 1, 2, & 3



ROOM LAYOUT

1. **Lodge# 1:**
 - Dimensions: 38'0" x 28'0"
 - Theater Style: 80 Chairs Max
 - Classroom Style: 40 Chairs Max
 - Group Style: 30 Chairs Max
 - Conference Style: 40 Chairs Max
2. **Lodge# 2:**
 - Dimensions: 31'0" x 24'0"
 - Theater style: 40 Chairs Max
 - Classroom style: 30 Chairs Max
 - Group style: 20 Chairs Max
 - Conference Style: 40 Chairs Max
3. **Lodge# 3:**
 - Dimensions: 31'0" x 24'0"
 - Theater style: 40 Chairs Max
 - Classroom style: 30 Chairs Max
 - Group style: 20 Chairs Max
 - Conference Style: 30 Chairs Max

ROOM FEATURES

- Wi-Fi Access
- Lodge # 1 and Lodge # 3 has partitions that can be closed to make two meeting rooms versus one.

REVISED 11/15/12

